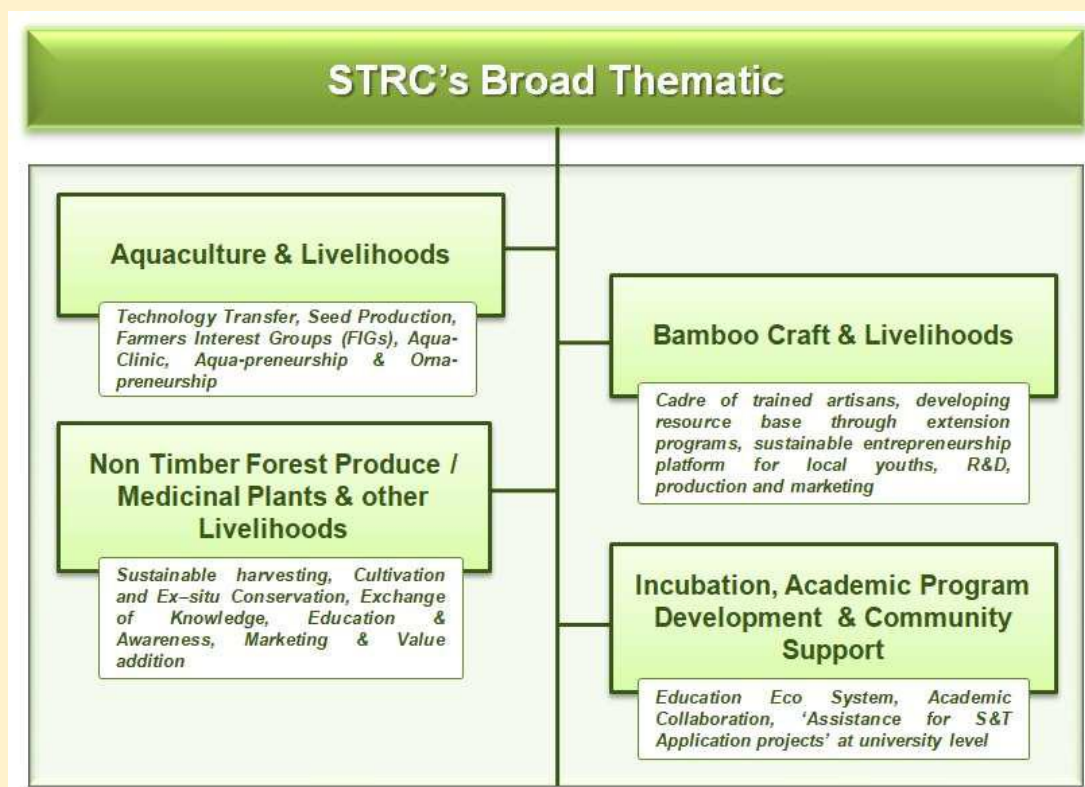


A Brief Note on Progress of STRC- GUG to the Chairman GB

April 22, 2019

Science & Technology Resource Centre (STRC), an autonomous institute at Gondwana University Gadchiroli, conceived and supported by Rajiv Gandhi Science & Technology Commission (RGSTC), Mumbai, GoM, is positioned as a centre of excellence for sustainable value creation, entrusted with generating livelihood opportunities by deploying appropriate S & T, particularly for the backward and marginalized tribal communities of Gadchiroli region. It is also committed to forge successful collaboration with local, state and national level institute and agencies to implement various livelihood programs.

In the last 12 months, STRC has been able to bring a team of young professionals on board with expertise in Agriculture, Aquaculture, Horticulture, Environment Engineering, Forestry, Information Technology etc. With the team on board and keeping the STRC mandate in mind, the following four broad thematic or domains have been developed aligned with STRC's vision:



Thematic Block Diagram

Current Activities/Projects:

A) Livelihoods through Aquaculture:

- Collaborative two year pilot initiative with MAFSU as technical partner on sustainable technology transfer in fish farming in 10 sites, 03 blocks and 08 Fish Cooperative Societies- Project completed (2016-18)
- Joint proposal with MAFSU/ CoF, Nagpur on development of organised fish seed production (Eco-hatcheries) through Farmers' Interests Groups (FIGs) in five talukas of Gadchiroli (2019-2022)
- Development of integrated fish farming (Agri-Aqua Models)- under development
- Establishment of ornamental fish rearing unit, specific to Women Self Help Groups
- Establishment of Aqua Clinics: for training and demonstration- under development
- Institutional Collaborations: National Fishery Development Board, CIFA etc.

B) Bamboo Craft & Livelihoods:

- With Bambu Studio/ IDC- IIT Bombay (02 projects): a) Training of Trainers & b) One year diploma in Bamboo Craft (2019-20)
- Developing a core pool of master trainers: Skill Trainings, Production Workshops/ Elementary production initiatives on 'Utility Craft'
- Model Bamboo Craft Village: To enhance and enrich bamboo resource base (raw materials), Developing Local Artisans Group, Common Facility Center (CFCs), Mass Production & Market access
- R & D: Designers, Design Interns, Range of Product Prototypes, Market Platforms, Exhibitions/ Exposures
- Institutional Collaborations: IDC- IITB, MSBDB, Forest Department- Gadchiroli

C) Non Timber Forest Produce/ Medicinal Plants/ Other Livelihoods:

- Herbal Plant Propagation Project-Funded by Dept. of Science & Technology, Govt. of India
- Indigenous Medicinal Knowledge-Funded by National Academy of Sciences India (NASI) & STRC (Multi-Donor)
- NTFP Marketing: Linking primary collectors to processing units/ large buyers/ pharma companies by strengthening existing structures/ formal groups on ground like Collector's Group/ Community Managed Resource Centres (CMRCs) to streamline NTFP collection. Primary Processing Units at community level as part of the CMRCs
- Integrated approach in Medicinal Plant Cultivation/ Sustainable Harvesting and Horticulture crops
- Development of Nurseries (Medicinal Plants/ Horticulture crops) and Demonstration Plots
- Other viable initiatives like small scale Backyard Poultry, Community initiative in post-cocoon Sericulture: Feasibility studies done, proposals are being reviewed
- Institutional Collaborations: Agriculture Department, District Sericulture Dept., Dept. of Poultry MAFSU, KVK, MAVIM & MSRLM etc.

D) Incubation, Academic Program Development, Community Support:

- 'Assistance for S & T Application projects' at university level (RGSTC Scheme to be implemented)
- Creating space/ ecosystem for incubation and research
- Certificate Course Modules for Artisans/ Supervisors to be developed with GUG faculty and outside experts; to also introduce diploma/degree courses at GUG at a later date.
- Communication for Development (c4d): Interactive platforms for Scientific Knowledge Group, Community Interface, Academicians & Institutions
- Institutional Collaborations: Foraging partnerships with Wildlife Conservation Trust in Science Education Space, IIFM Bhopal in NRM etc.

A major New Activity: Integrated Dhanora Block Development Plan (I-DBD)

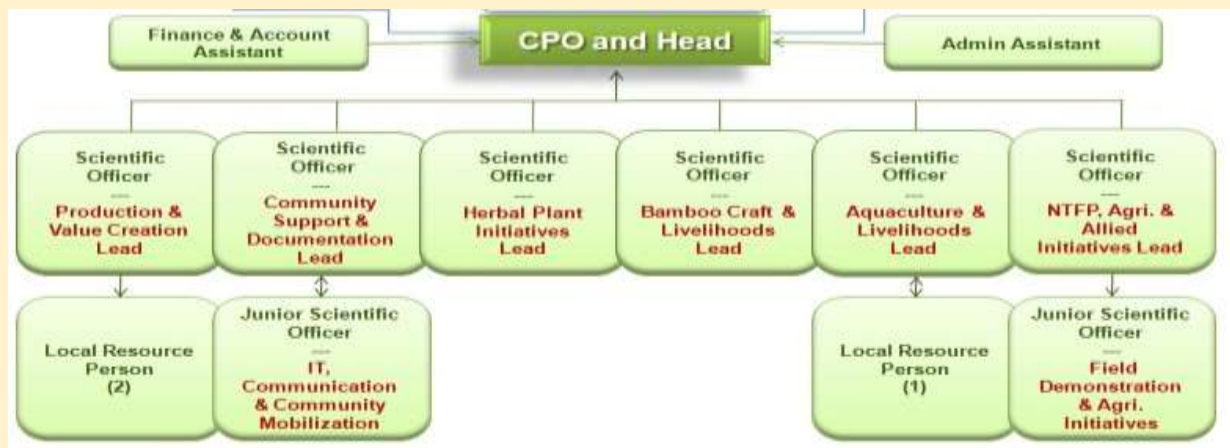
- a) Integrated need based site specific livelihood interventions in 02 Clusters of 05 village each will be implemented in a phased manner (02 villages from each cluster in the 1st phase)
- b) The 'Family/ House hold' as the unit of intervention, phase-wise implementation. A total of 250 Families have been short-listed, out of which at least 50% would have multiple intervention.
 - Bio Resource Centre
 - Model Villages
 - Medicinal Plant Cultivation, Horticulture, Aquaculture, Poultry, Bamboo Craft, Low Cost Solar Cooker

Mobile Demonstration Unit (MDU) as a multipurpose overarching tool for education and awareness:



Van based AV interactive platform cuts across all projects – IEC, Awareness generation, Technology Transfer, Best Practices and so on. So far 31 field sessions organised in 25 villages, over 600 community members addressed.

STRC Organogram:



STRC Team:

1. 06 (Scientific Officers) with exclusive domain/ thematic
2. 02 (Junior Scientific Officers) with exclusive sub domain/ sub-thematic
3. Project Staff: 05 Staff (DST funded project)
4. Project Staff: 03 Staff (NASI funded project)
5. 01 Admin Assistant and 01 Finance & Accounts Assistant

Forthcoming Recruitments: 02 Field Assistants under joint aquaculture project and a Field Assistant for Bamboo Craft & Livelihoods

STRC as a Section 8 Company:

- STRC is in the process to develop a 'Revenue Stream' to generate entrepreneurship opportunities for local youth through Section- 8 Company.

STRC Semi-permanent infrastructure:

- Civil work near completion, expected to be ready by end of September 2019

STRC's visibility (Website, Brochures, Newsletters/ E-Newsletters Reports etc.):

- Website for STRC is to be hosted by end of May 2019
- Since Jan 2019: STRC monthly newsletters, e-copies will soon be circulated for the period of Jan-Mar 2019.
- Annual Report (First Draft for 2017-18 & 2018-19 combined) will be presented at the GB Meeting
